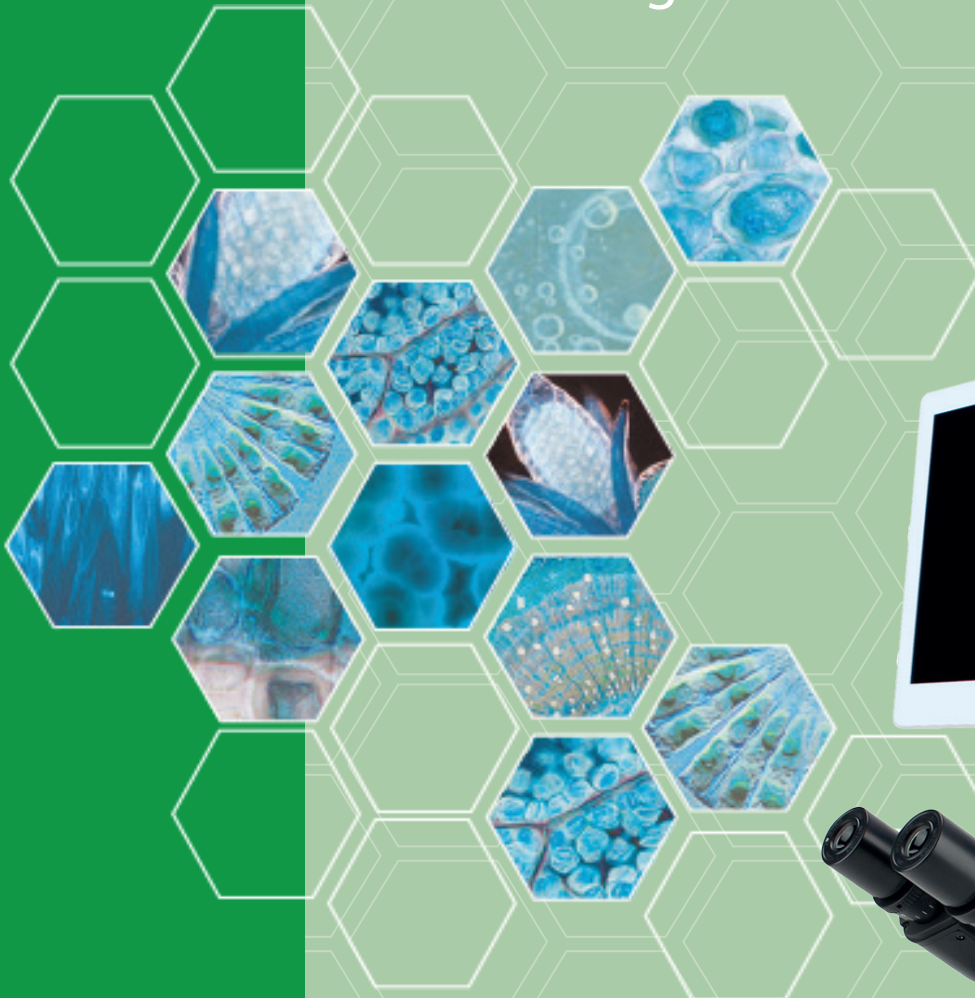


JASMIN MCX50

Digital LCD Microscopes



micros
Austria

micros Labway micros Labway



JASMIN MCX50 Set Configuration

Optical System	Plan infinity corrected optical system	●
Standard Magnification Range	40x - 1000x	●
Illumination System	Advanced LED Long life LED illumination (30.000) for 110 - 220V, 50-60Hz	●
Microscope	compact size W225/D324/H515, net weight 6kg sturdy base, 203 x 145 mm	●
	Anti fungus treatment for all optical parts	●
Focusing	low position, coaxial coarse and calibrated fine focus control , graduation reading 2 µm per division ,total focusing range 20mm	●
Nosepiece	Quadruple reverse angle revolving nosepiece	●
Head	Arctype Trinocular head 30° inclined, 360° rotatable interpupillary distance 48-75mm, diopter adjustment	●
	Compensation Trinocular Head for MCX50 Series , for INFINITY optics, beam splitter 50:50, 30° inclined , 360° rotateable. Interpupillary Distance 55-75mm. Diopter Adjustment. With Anti-Fungus treatment	●
Stage	Double layer specimen stage with right handed mechanical stage (143x133mm), moving range 75x30 mm	●
Condenser	Abbé Brightfield condenser ,n.A. 1.24, with integrated iris and filter tray condenser and light intensity adjustable . Frosted filter built in collector	●
Objectives	ICO ² Plan 4x/0.10, WD 23.5mm, CC- ICO ² Plan 10x/0.25, WD 10mm, CC 0.17 ICO ² Plan 40x/0.65, WD 0.54mm, spring loaded, CC 0.17 ICO ² Plan 100x/1.25, WD 0.13mm, oil , spring loaded, CC 0.17	●
Eyepieces (one pair)	Eyepiece WF 10x/20 Widefield (Ø 23 mm)	●
	Eyepiece P16x/12 (Ø23 mm)	○
	Eyepiece micrometer (with pointer or reticule)	○
Miscellaneous	Daylight mirror for outdoor use	○
	Aluminium transport case	○

● -included ○ -optional

5MP Digital Screening Kit

Image Sensor	Color CMOS	●
Pixel	5.0MP	●
Pixel size	1/28	●
Menu	All digital UI design	●
Method of Operation	Mouse	●
Lens interface	C-type	●
Power DC	DC 12V	●
Output method	HDMI	●
White Balance	Auto/Manual	●
Expose	Auto/Manual	●
Display Frame rate	1080P@60fps/1080P@50fps	●
Scanning method	Line by line scanning	●
Shutter Speed	1/50s(1/60s) 1/10000s	●
Operating Temperature	0°C-50°C	●
Magnification/Zoom	Support	●
Saving function	Support U disk storage	●